

Ochils Mountaineering Club

Inverardran Cottage, Crianlarich, Scotland, FK20 8QS

www.ochils.com

Thank you for showing an interest in the
Ochils Mountaineering Club's - Inverardran Cottage

A new extension was added. This includes a large kitchen / dining facility & separate food store. We also increased the toilet / shower facilities by incorporating "wet rooms" in both the ladies and gents areas plus there is a separate wet room. We added a separate 4 bed private dorm for exclusive use by our *Club Members (refer note below). There is WiFi Internet Access.

A total of 18 Guests can use the facility.



The intention of this leaflet is to provide you with a Brief Summary outlining our facilities, which can be shared with the other members of your club / group.

The current bed night fee is obtainable by emailing our Hut Convenor via our web site. The rate quoted is reviewed annually in March at our AGM. (Refer Payment details below, page 7)

Any changes made to the bed rate are effective from AGM date.

Hopefully you will find this information useful and considering booking our accommodation for future events / group meets.

The **Cottage** is fully equipped for **Self Catering**. For those wishing to eat out there are Restaurants & Bars within easy walking distance. The Village shop is also happy to assist in providing a pre-ordering service and will also deliver the provisions or stay open for people who are travelling long distances.

Location and Travel. The cottage is the whitewashed building situated next to the Ben More Restaurant at the east end of Crianlarich. It is the first building on the right as you drive into Crianlarich along the A85 (Grid Reference NN 392250 sheet 50). Crianlarich is easily accessible by car; the cottage has private parking within grounds, there are bus and / or rail services to Crianlarich from Glasgow, Stirling, Oban and Fort William.

Kitchen & Dining

Kitchen / Dining - Cooking arrangement. All utensils, crockery and cutlery are provided. You may wish to bring additional tea towels. There are two fridges. Two cookers which have four-burner gas hobs, double oven & grill, separate toaster and microwave ovens. Hot water is provided by a large under sink boiler which supplies the sink unit.

Kitchen Area



Food Store



Dining Area



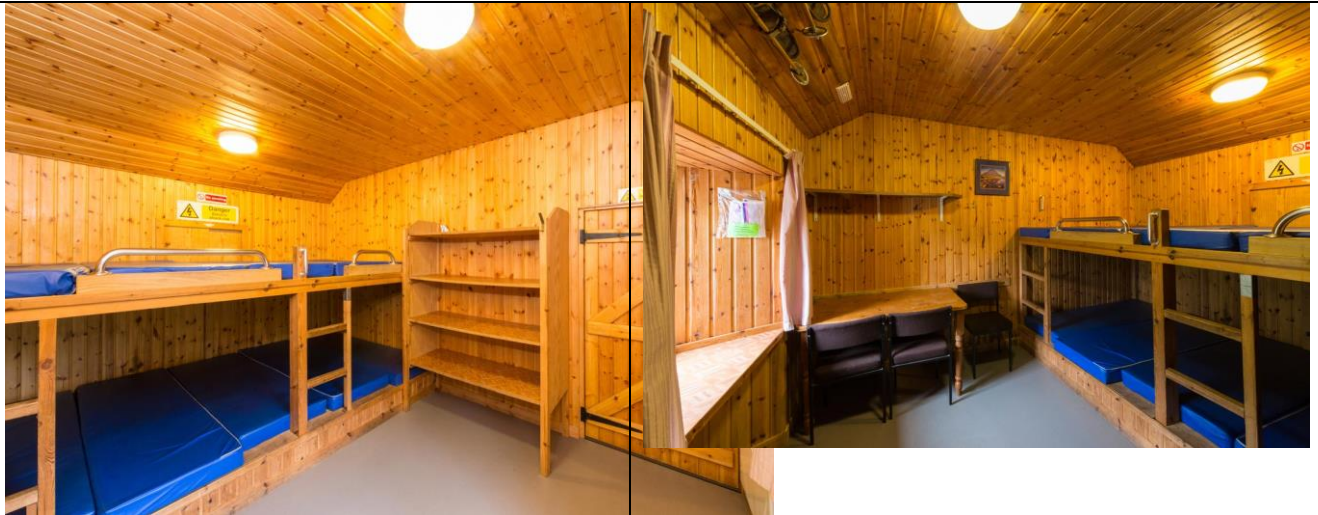
Dormitories

Sleeping Arrangements - Two dormitories, which Sleep a Maximum of **18 Guests**.

You DO need to bring your own sleeping bag / pillow.

“Auld Kitchen”

which sleeps **10** on two alpine bunks.



“Ben More”

which sleeps **8** on double & single bunks.



Shower / Toilet Facilities

There are **separate Ladies and Gents facilities** fitted with hand basins and instant hot water showers and toilet facilities. Plus there is a separate wet room / toilet.

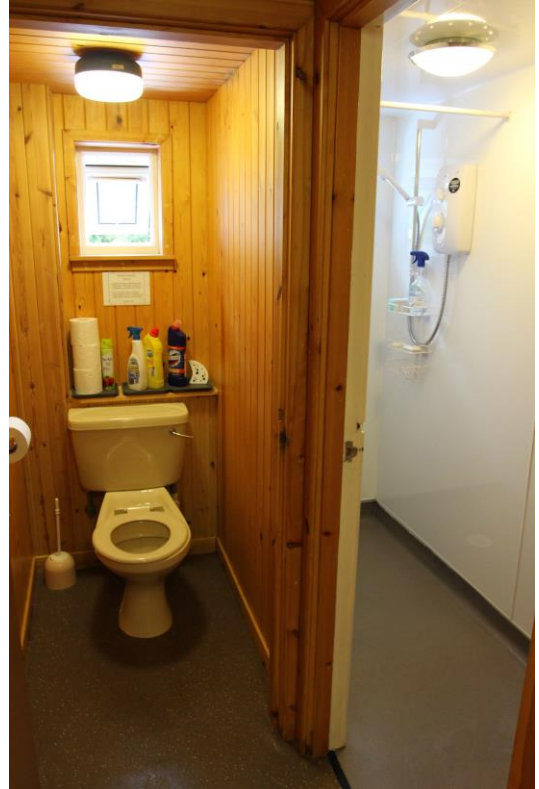
Gents

2 Wash Basins, 1 Shower, W.C and Urinal



Ladies

2 Wash Basins, 2 Showers & 2 W.Cs



Separate Wet Room & W.C.



Lounge



Electricity and gas are included in the cottage bed night fee, but if you wish to use the **Wood Burning Stove** in the lounge area you will need to supply your own **DRY Seasoned Logs / Kindling & Fire Lighters**.

Ensure Stove instructions are carefully followed.

Library – A small library has been established, should the weather turn bad there will be plenty for you to read. This is split between the dining area and lounge.

These Mountain / Reference Books should be left in cottage for others to read.

Separate **Boot Room & Drying Room** – both are heated and situated inside the entrance door. The Drying Room also has a dehumidifier installed.

Mops / Pails & Brushes for cleaning are kept in the **Boot Room**. A Hoover is kept in the small cupboard in corridor next to seating area. Cleaning items are also kept in the individual toilet and kitchen areas.

Re-Cycling - There is a STRICT Council re-cycling policy in place which takes **ALL** food waste / newspaper / glass / plastic bottles & milk cartons / cans / tins etc and separate RE-CYCLE BOXES & Food Waste Caddy have been provided.

A **Gate** has been fitted on the drive as an extra safety feature to help keep pets / children away from the road.

Sun Deck with View to Ben More



Ramp Access to Kitchen / Dining Area



Dog Owners are welcome to bring their pet, provided the other guests do not object. The dog owner must follow instructions for when inside cottage and not let their dog foul inside the cottage / car park or in the grounds. If this happens, it is the dog owner's personal responsibility to clean up after their pet.

WiFi Internet Access

Access is free, Login is via Facebook or FON (only)

Please note that the service is slow! It's suitable for email, Facebook and general browsing, not streaming video or iPlayer.

After connection, visit any website. You will be redirected to a 'landing page' where you may login.

Sites to visit:

<http://www.benmorewebcam.co.uk>

<http://www.ochils.com>

<http://www.facebook.com/omccottage> (leave any comments here!)

Ben More Webcam

The highest Munro in the area is 'Ben More'. We now have a webcam pointed at it.

See <http://www.benmorewebcam.co.uk> local weather will also appear on this site.

How To Check Availability

If you would like to check availability or have any other related questions, please free to contact the Hut Convenor by using the e-mail link from our web page via Cottage tab – How To Book - or send your enquiry directly to:-

omc-cottage@ochils.com

Or by calling Christina - Tel 01259 760734

PLEASE NOTE:

*OMC MEMBERS (including children accompanied by an adult) have the right to use the cottage at any time but are not expected to inconvenience visiting guest groups.

The members' private room is available for OMC Members use only.

(OMC Members = Adult Members, registered Children of Members & Junior Associates)

How To Pay For Your Stay

To secure any booking a Deposit is required - £50 required for one dorm / £100 for both dorms (for a 2 night stay). Balance payment is due 3 weeks prior to your stay.

BACs bank transfer is our preferred payment method:-

Bank of Scotland – Ochils Mountaineering Club

Sort Code 80-91-28

Account 06025602

Alternatively, if you can only pay via cheque make the cheque payable to :-

‘Ochils Mountaineering Club’

DO NOT ABBREVIATE OUR CLUB NAME ON YOUR CHEQUE AS THE BANK WILL NOT ACCEPT IT DUE TO NEW BANK POLICY. (e.g. Ochils MC is NOT acceptable)

YOUR BOOKING WILL NOT BE SECURED IF INCORRECT CHEQUE DETAILS ARE WRITTEN.

Send your cheque to the Hut Convenor – Mrs C Murray, 30 Cleuch Drive, Alva, Clackmannanshire, Scotland, FK12 5NY.

NB: Deposit is non-refundable unless another booking is received for the cancelled dates.

